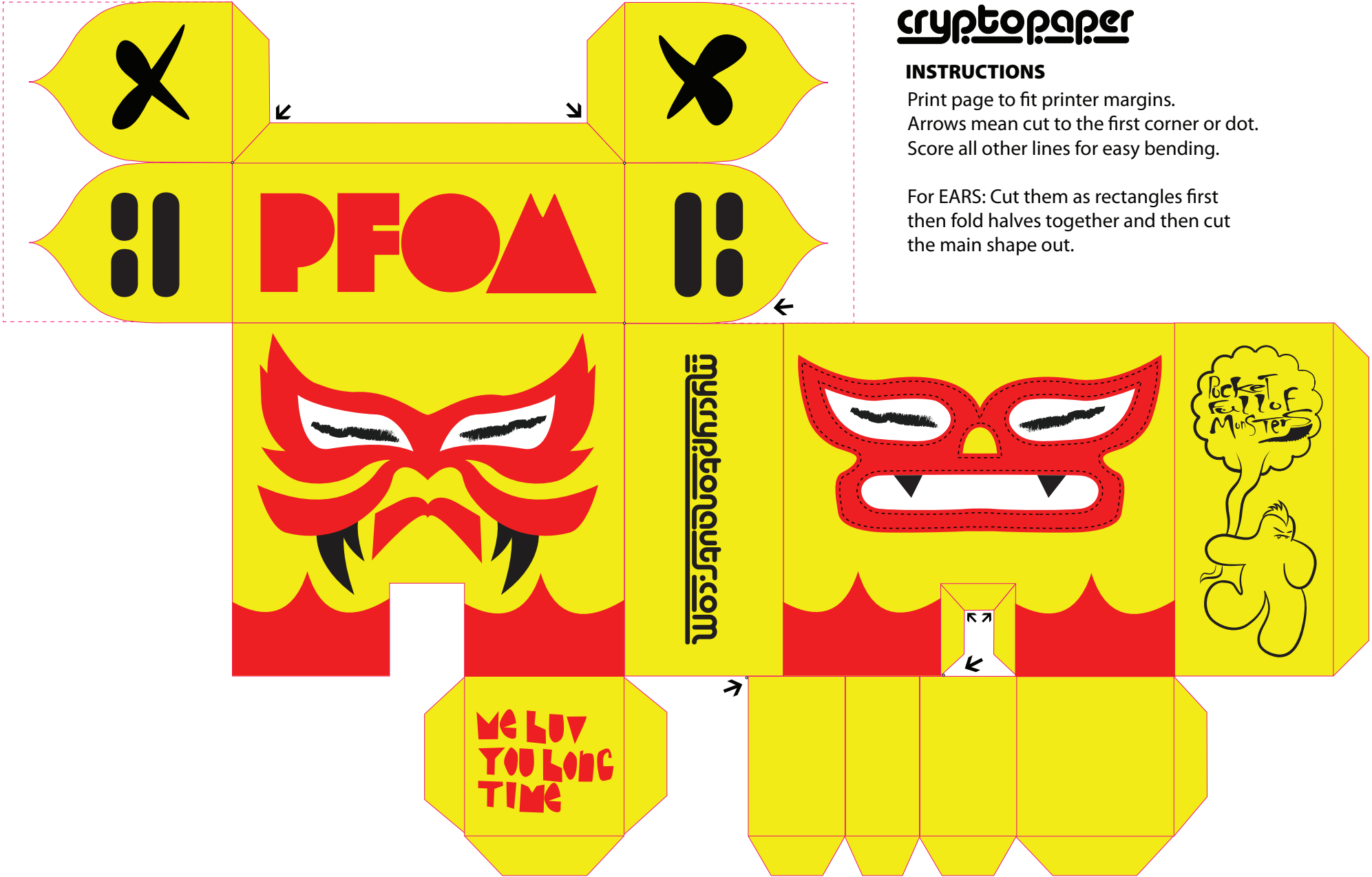


**INSTRUCTIONS**

Print page to fit printer margins.  
Arrows mean cut to the first corner or dot.  
Score all other lines for easy bending.

For EARS: Cut them as rectangles first  
then fold halves together and then cut  
the main shape out.



**↑ INSTRUCTIONS**

Cut from arrow straight  
across to the other arrow.